

ITCN-Urban95 India Challenge

Infant, Toddler, Caregiver-Friendly Neighbourhoods for Indian Cities



Bernard
van Leer
FOUNDATION



WRI INDIA



Photo: Madhura Kulkarni, WRI India



1/5th of world children live in India

8.1 million children of 0–6 year old live in Indian slums

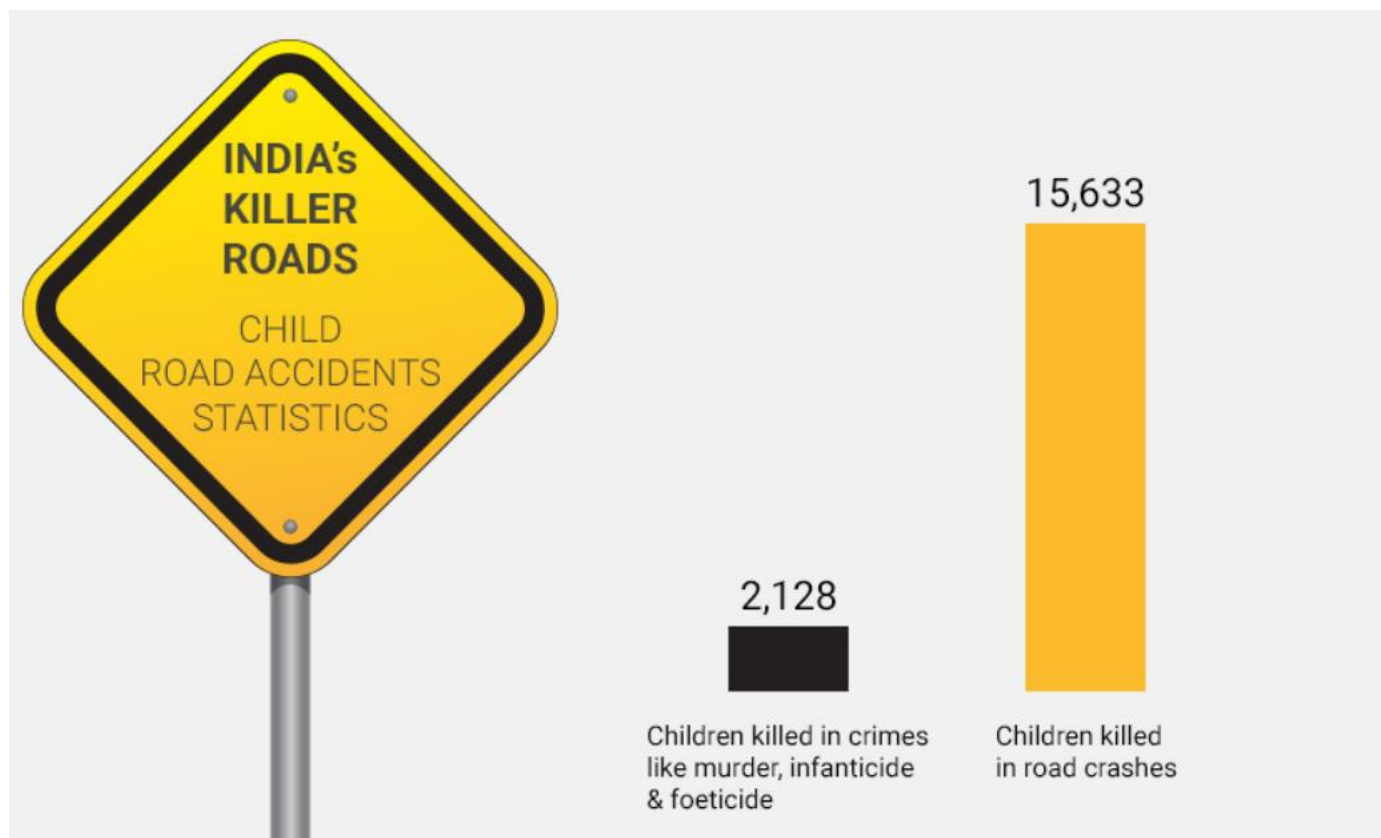


Source: Census 2011

2.7 Lakh
0 - 6 year old
children are
homeless in
India



43 children lose their lives on Indian roads every day



Source: Global Burden of Disease 2017.

A photograph of a cityscape obscured by a thick layer of smog or haze. The sky is a pale, yellowish-grey. In the foreground, there are dense, low-rise buildings. In the background, several taller buildings are visible, including a prominent, dark, rectangular skyscraper on the right side. The overall atmosphere is one of air pollution.

Every 3 minutes a child dies in India because of inhaling toxic pollutants in air

Source: Global Burden of Disease 2017.

Photo Credit: Jean-Etienne Minh-Duy Poirrier/Flickr

Where are our children playing?

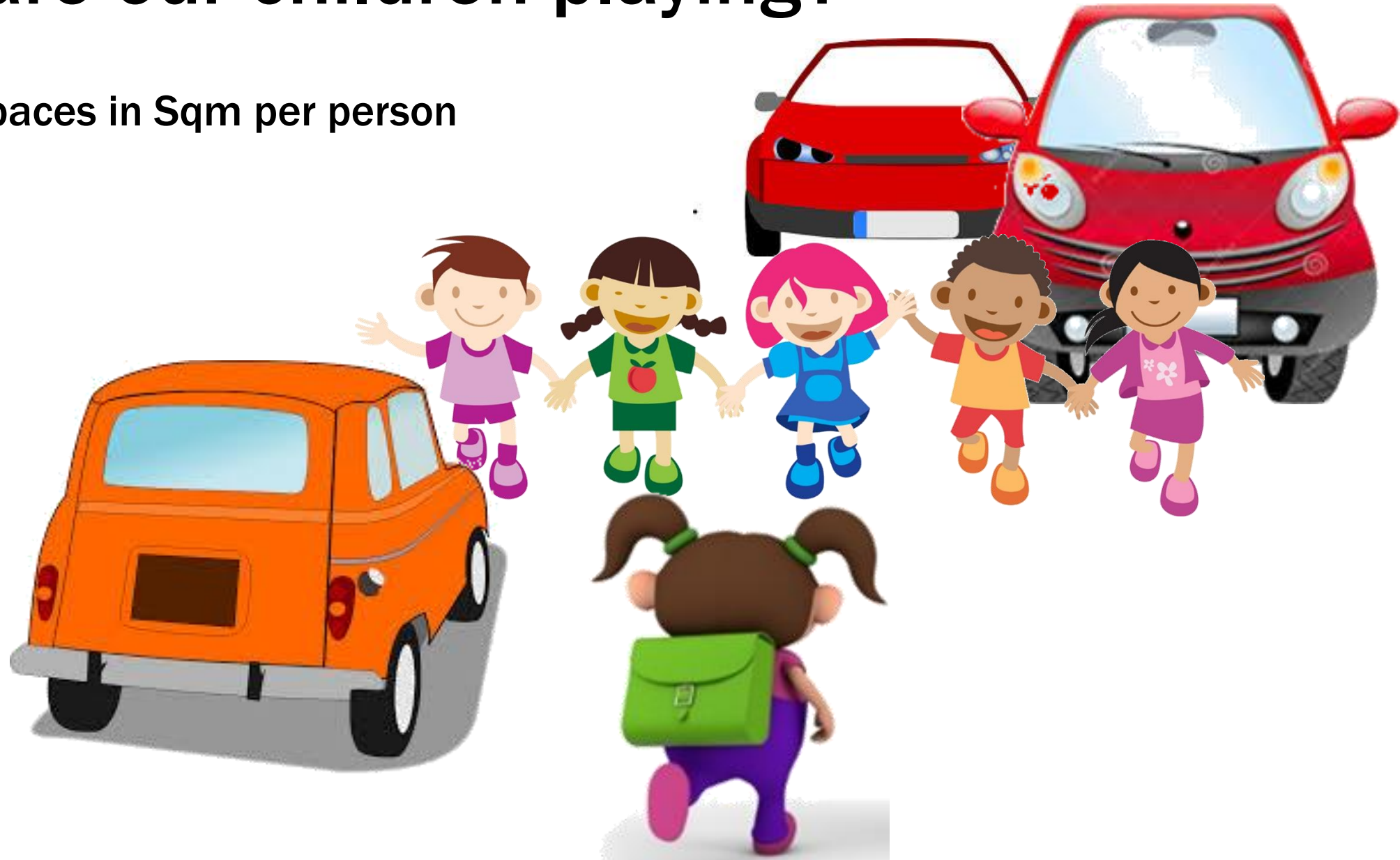
Public open spaces in Sqm per person

Mumbai 1.1

Bengaluru 2.0

Chennai 0.81

Curitiba increased
from 1 Sqm to
51.5 Sqm per
person by
planning



Early childhood development services



Photo Credit: Sudhir Samal, Creative Common

**Rethinking urban development
considering young children at the center**

National Level Vision & Partnerships





ITCN-Urban95 India Challenge



**Bernard
van Leer**
FOUNDATION



WRI INDIA



If you could experience the city from an elevation of 95 cm – *the height of a 3-year-old* – what would you change?

ITC: Caregiver along with infant & toddler as one unit



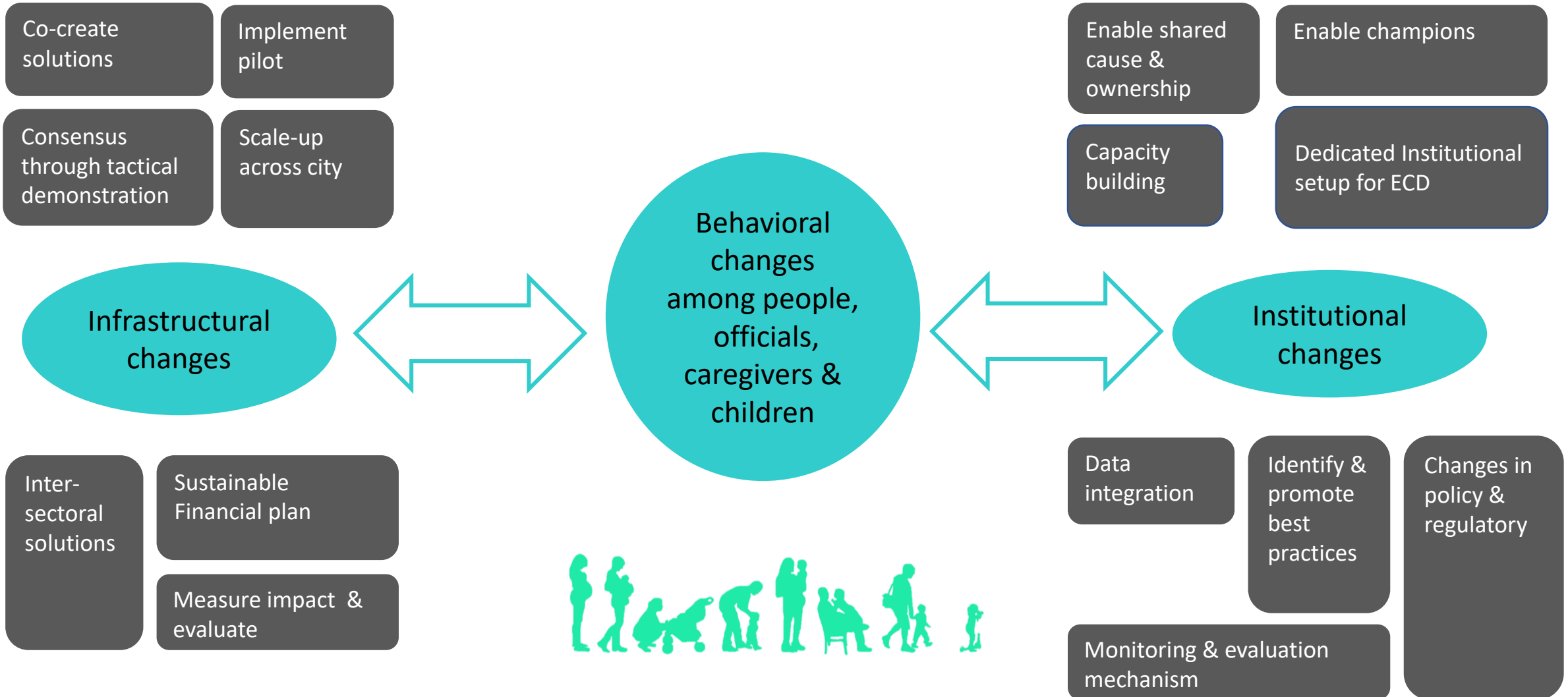
Caregiver wellbeing & early childhood development



Objectives of the challenge

1. To promote lens of infant – toddler – caregiver (ITC).
2. To sensitize using the ITC framework & catalyze cities to mainstream
3. To collect, analyze data, facilitate pilot demonstration of ITC solutions & identify best practices
4. To develop a network of ITC champions

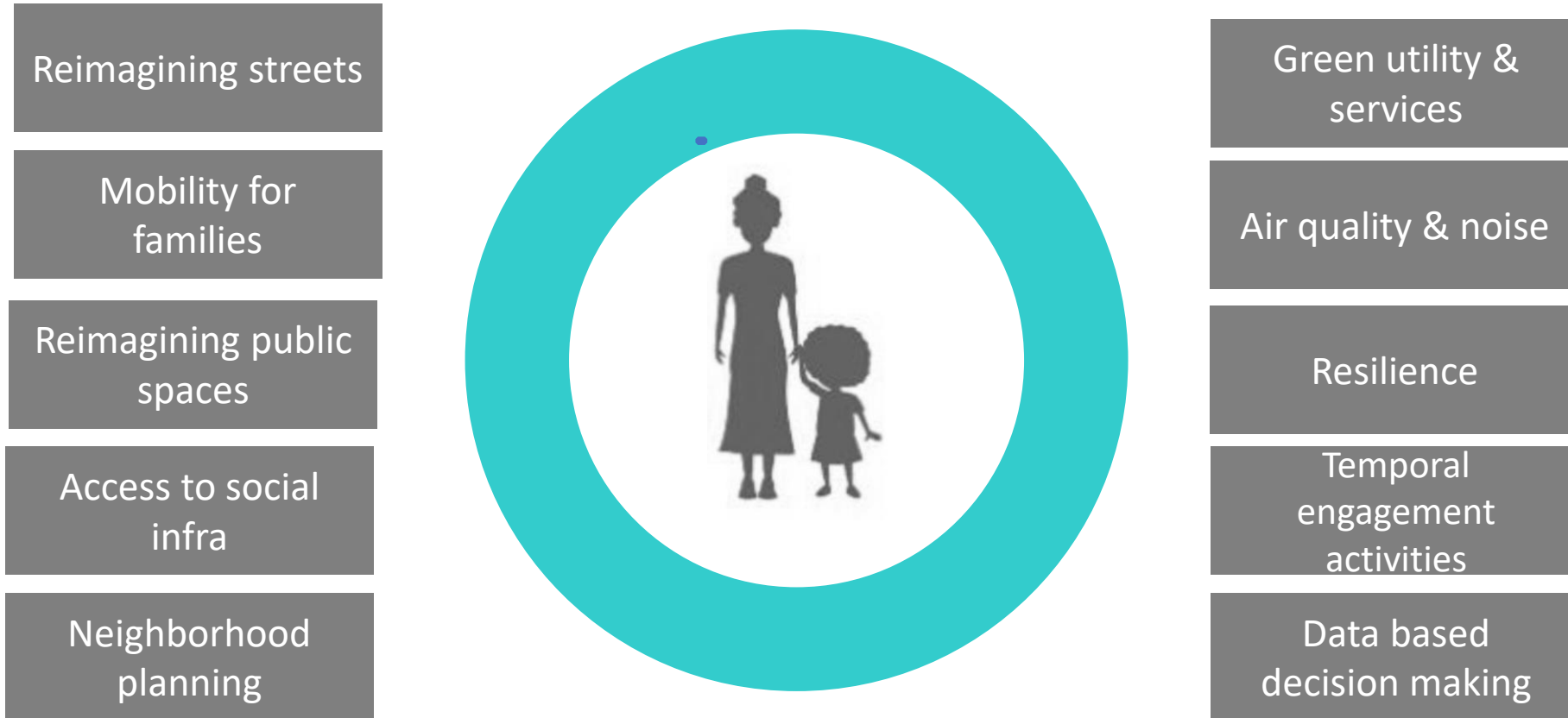
Towards a behavioral change



Neighborhood based approach for development & governance

Urban design approach
Inter-sectoral/ inter-departmental
Integrated & complimentary
Co-created
Solutions that can be scaled-up
Data -oriented

Improving cities considering young children at center



Streets as public spaces



**Opportunities
to play in
dedicated
spaces &
everyday play**



Organizing public spaces

No defined bus stop

Underutilized space | Grey area



Mobility for infants, toddlers & caregivers

Safe & comfortable

Get priority

Support chained trips

Connect to local facilities

Waiting spaces, amenities

Cleaner fuel



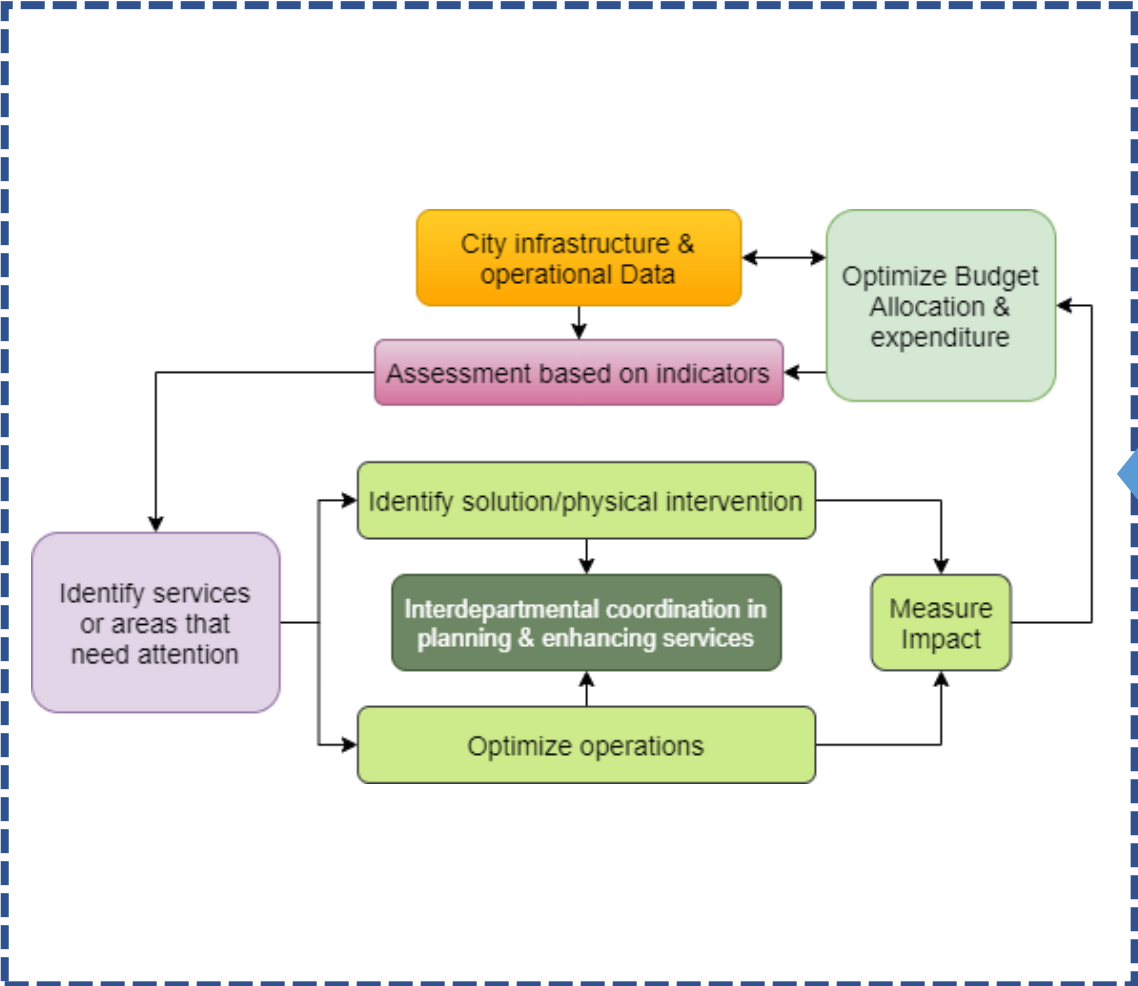
BMTC Bus, Bangalore
Picture courtesy: Madhura Kulkarni, WRI India

Access to ITC facilities

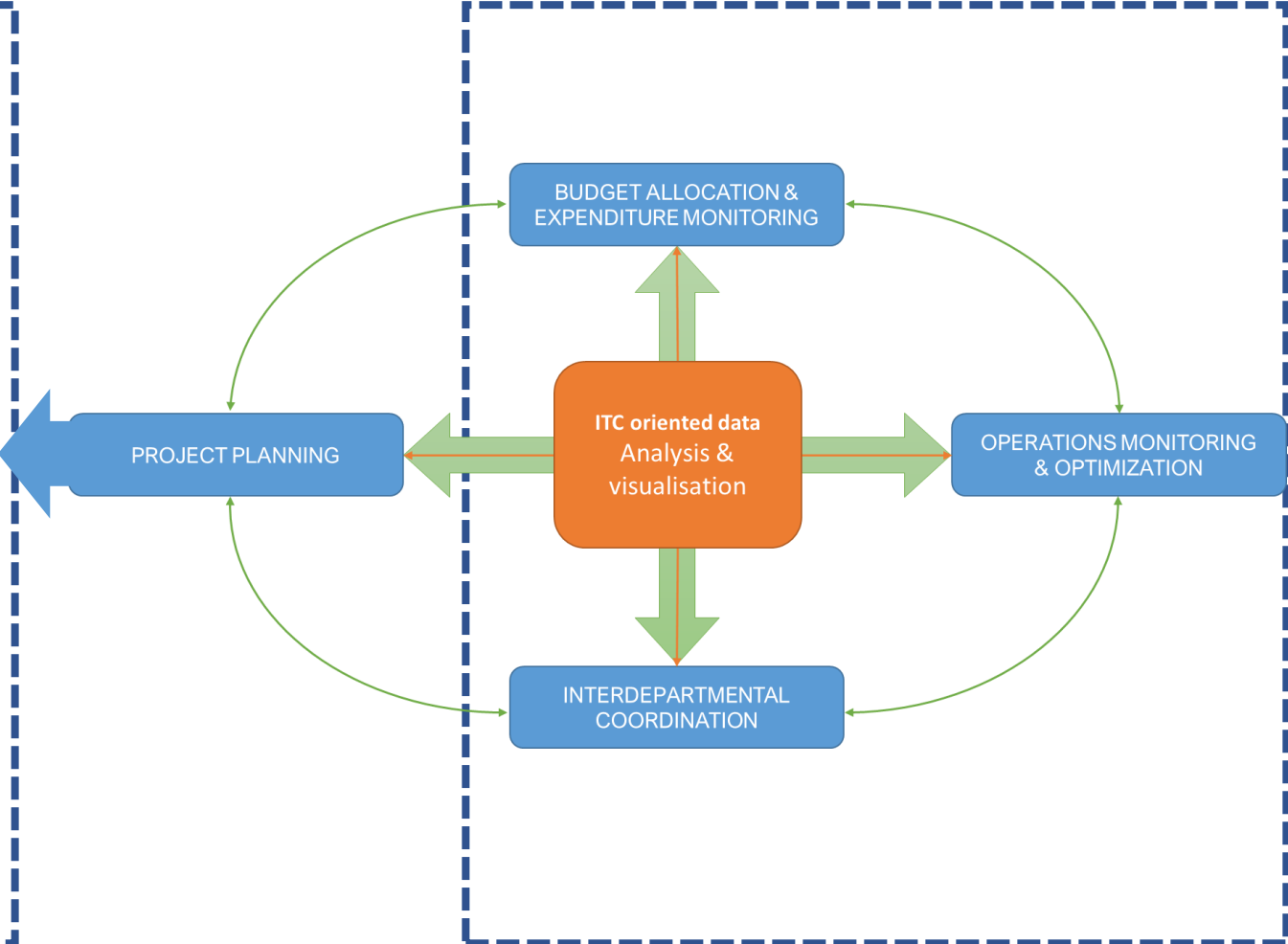


Data driven decision making

TARGETED IMPROVEMENTS THROUGH PROJECTS



OVERALL FUNCTIONING OF MUNICIPAL CORPORATION/ CITY AGENCIES



Enabling participation



Community engagement & Quick wins



Photo: Rahagiri Foundation

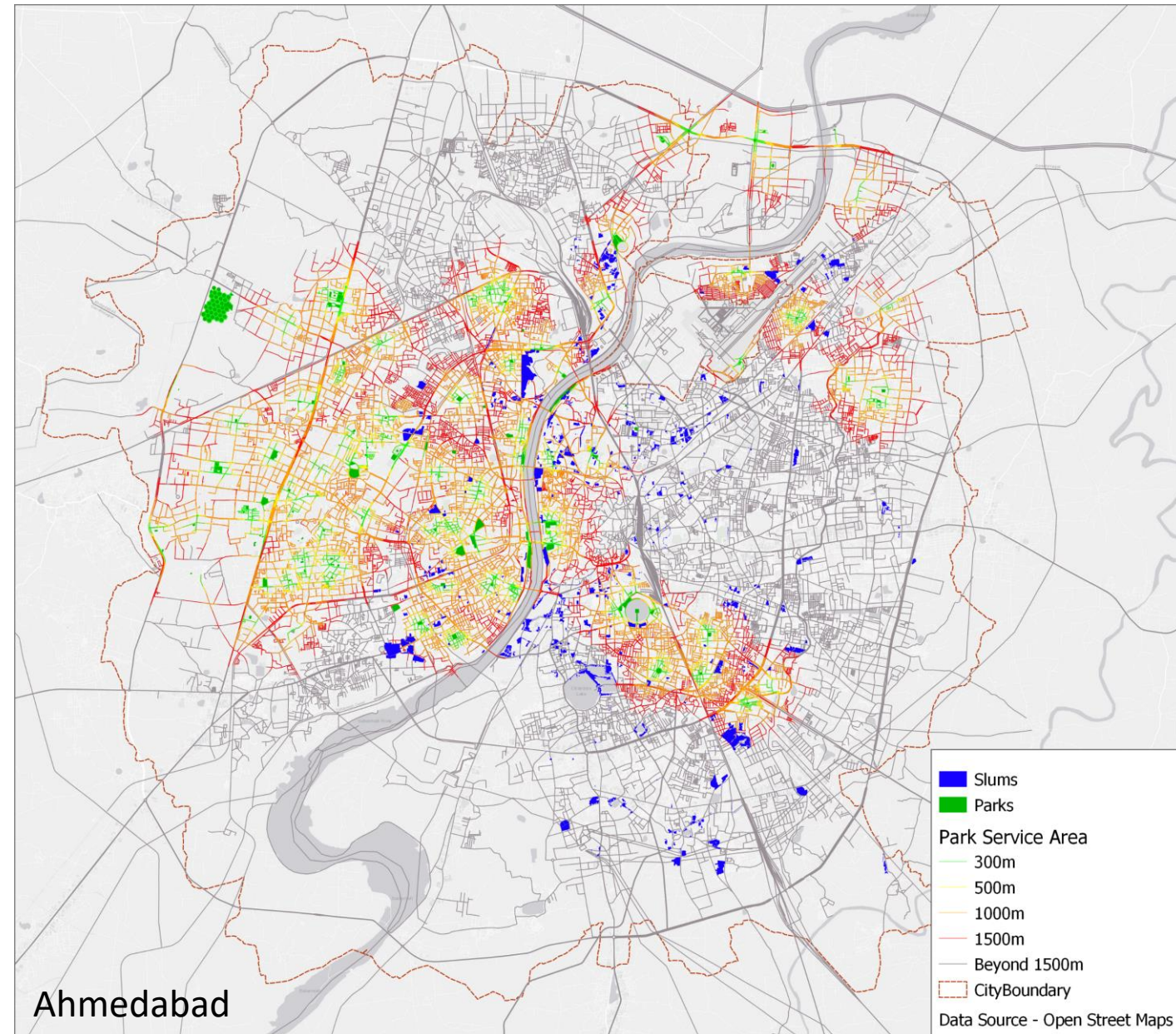
Tactical trials as quick wins



School Area Road Safety Assessments and Improvements
Dar es Salaam, Tanzania

Rethinking long-term policies, plans, regulations

- Development Plan/ Master Plan
- Comprehensive Mobility Plan
- Environmental Management Plan
- Heritage Conservation Plan
- Pedestrianization plan/policies
- Smart City Plan
- Local Area Plan
- Town Planning Schemes
- Development Control Regulations
- Standard Items of Rate (SOR)
- Any other State Programs or DPR



Institutionalizing dedicated ITC setup in city agencies



Photo: The Better India

Potential City Partners



Municipal Corporations



Smart City agencies

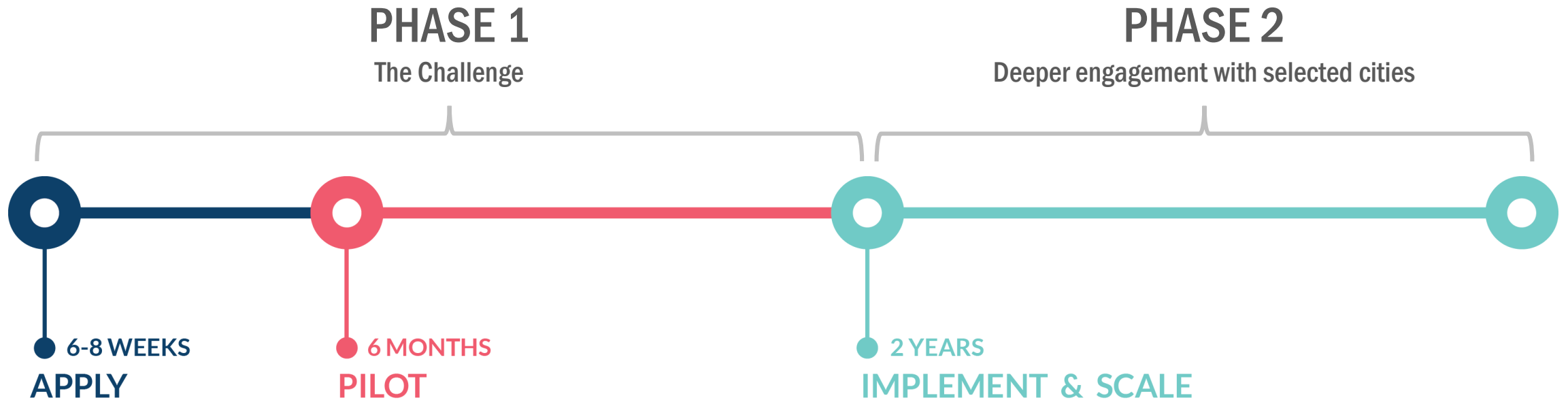


Development Authorities



**Other agencies:
Example: Metro Rail**

The Challenge Process



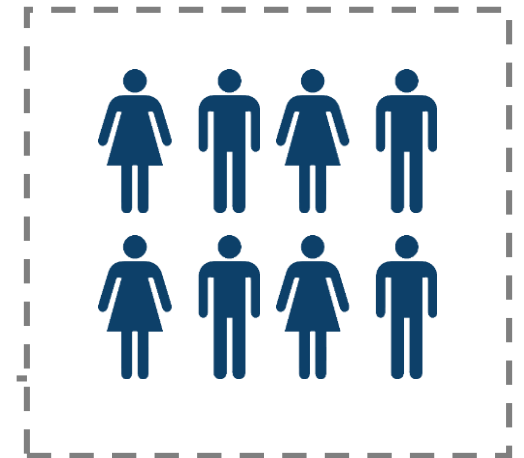
PHASE 1:



6-8 WEEKS
APPLY



> 1 LAKH



WHO CAN APPLY:

- City Municipal Corporations
- Development Authorities
- Smart City SPVs
- Metro Rail agencies
- Other govt agencies

PHASE 1:

6 MONTHS
PILOT



Technical Assistance



Capacity Building



Peer Cities Network

PHASE 2:



2 YEARS

IMPLEMENT & SCALE



PHASE 2:



2 YEARS

IMPLEMENT & SCALE



Technical Assistance



Capacity Building



Peer Cities Network



International Tour



Scale-up Support



Power of
seeing
through
the lens of
ITC

Bagota's lens of children first policy



Enrique Peñalosa, December 2, 2013

<https://go.itdp.org/display/public/Penalosa+presentations++TN-Chennai++Nov+2013>



To learn more about the ITCN-
Urban95 India Challenge:
<https://smartnet.niua.org/itcn>

Thanks

Sree Kumar. K, Head, Integrated Transport, WRI India
sreekumar.kumaraswamy@wri.org
+919769711068