

Informal Transportation: Digitalization and Data Sharing



World Business Council for Sustainable Development (WBCSD)

WBCSD is a global, CEO-led organization of 200 forward thinking businesses working together to accelerate the transition to a sustainable world.

Our **vision** is to create a world where more than **nine billion people** are all **living well** and **within the boundaries of our planet**, by 2050.



GLOBAL



UNIQUE BUSINESS
PLATFORM



CEO-LED



MARKET-DRIVEN



60 global experts contributed to this initiative

Working Group Members:

Businesses

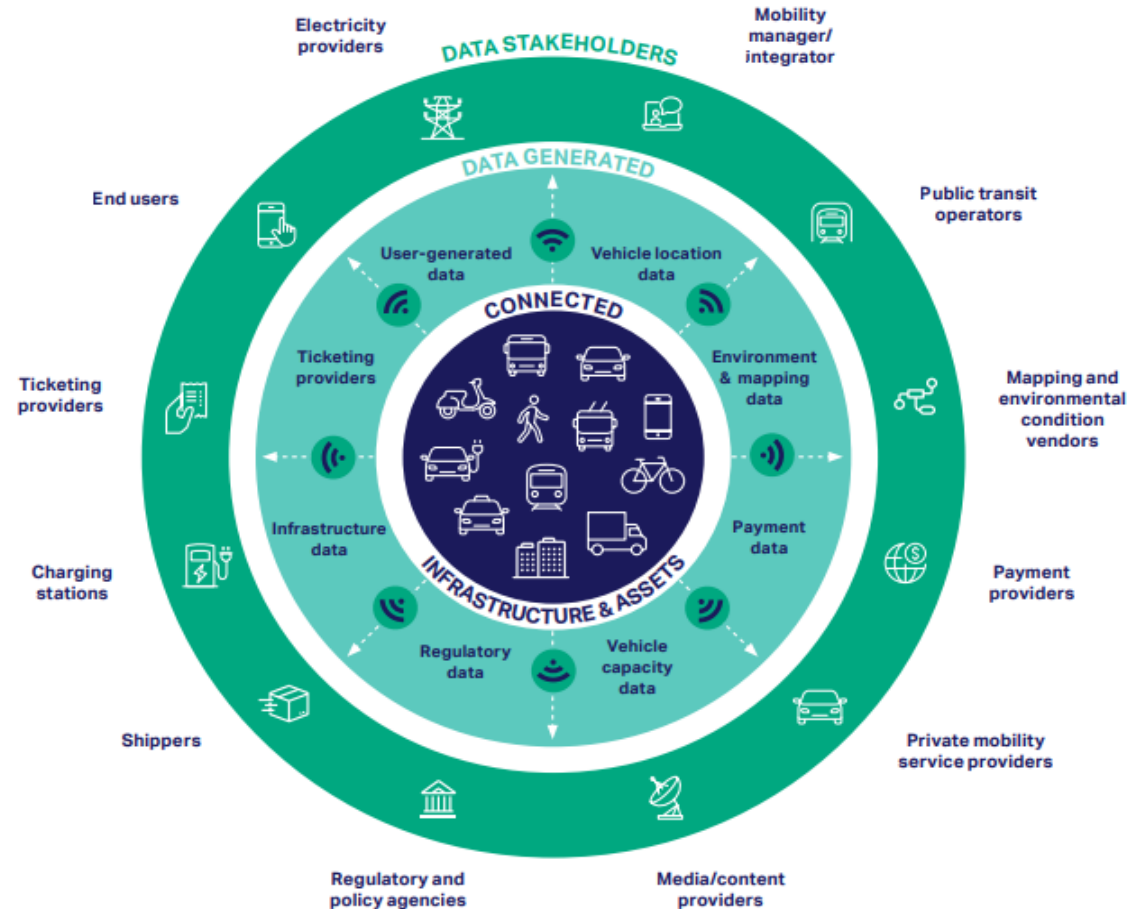
Civil Society Orgs

Other Orgs

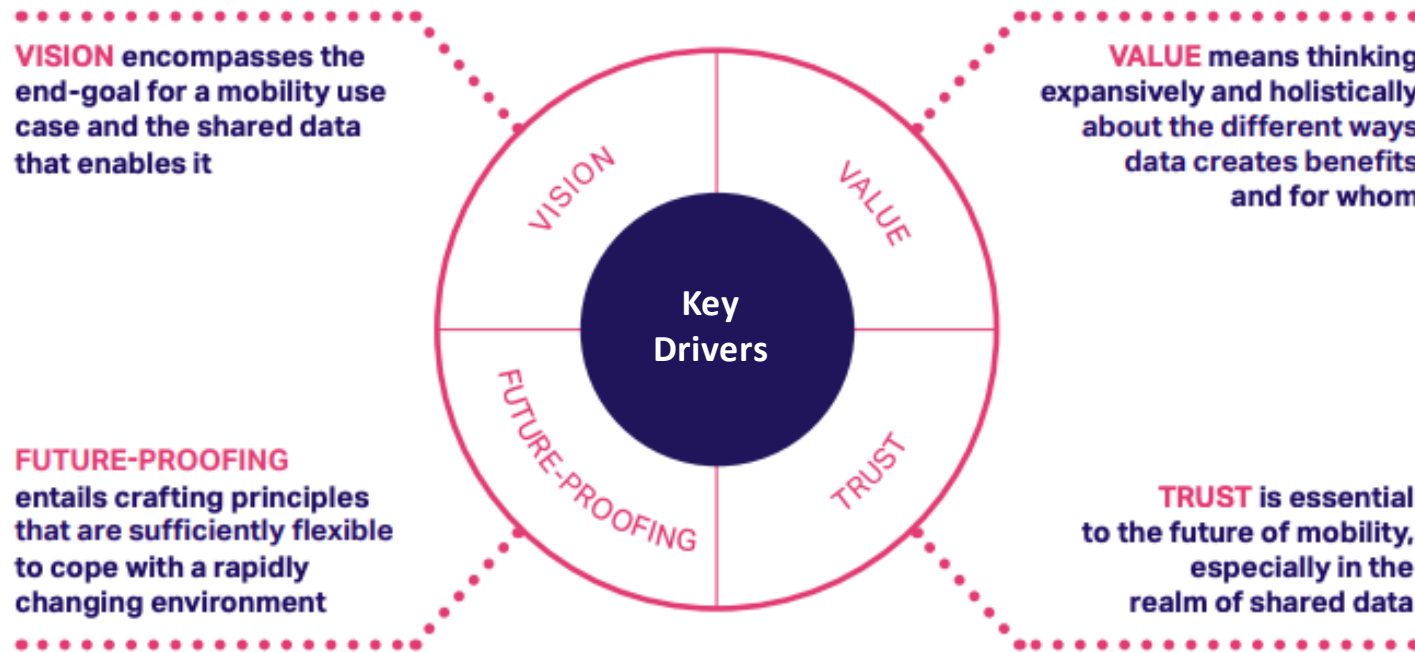
Observers and Reviewers:

Co-Chairs:

Shared data will constitute the nervous system of future sustainable urban mobility systems



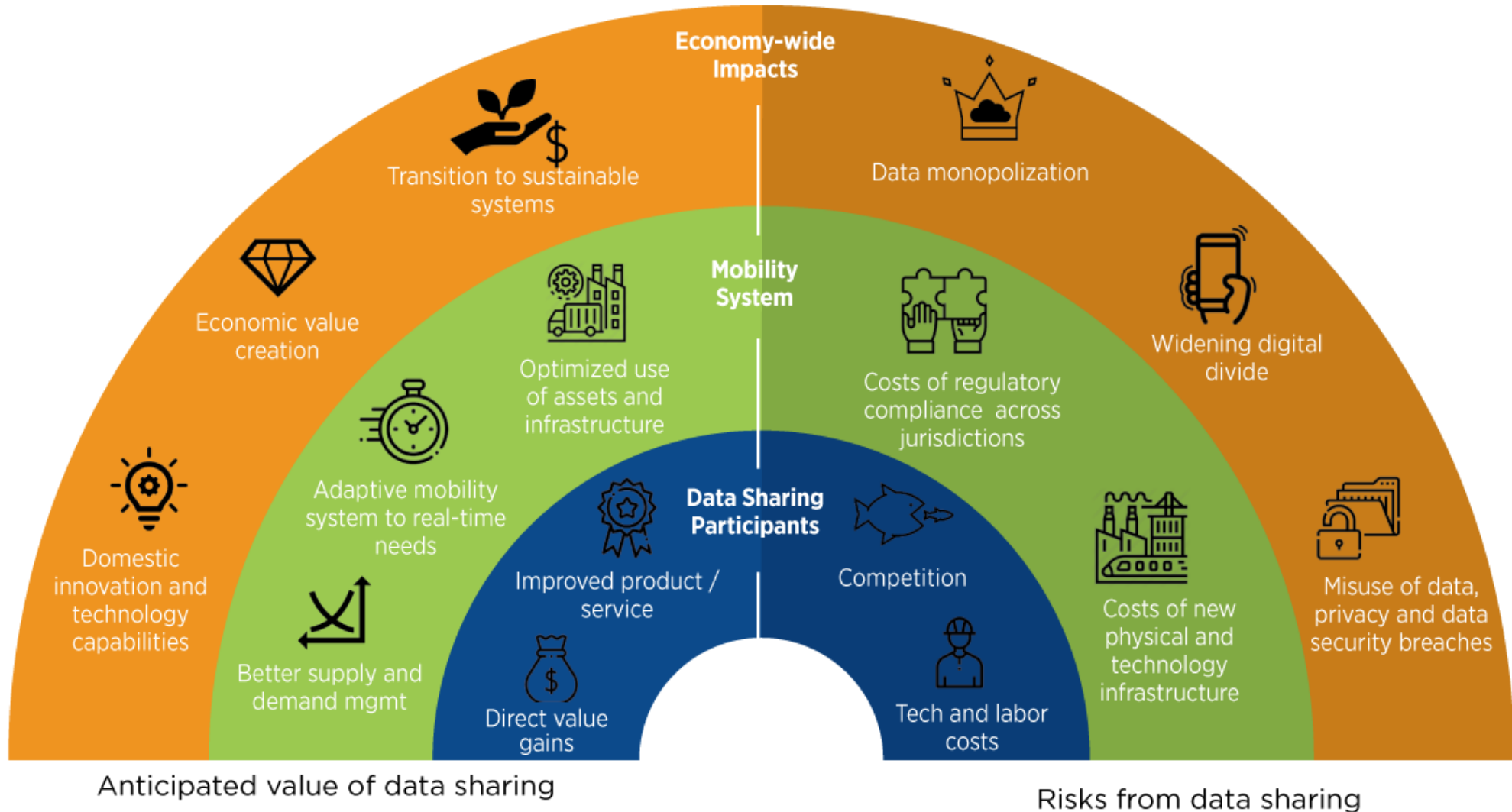
Five principles to guide data sharing models and architecture



EMERGING PRINCIPLES FOR DATA-SHARING

- 1 Data-sharing should enable all stakeholders to create and capture value
- 2 Data-sharing must be ethical, inclusive and unbiased
- 3 Data-sharing should incorporate privacy by design
- 4 Data-sharing should embrace cyber-security by design
- 5 Data-sharing should be adaptive and iterative

Data sharing can have economy-wide impacts



Policy making can create shared value

Increased digitalization of transportation systems and identification of **new value streams** by processing and merging data are driving increased data sharing

PATH 1: Collaborative and harmonized policy-making processes that guide development of data sharing ecosystems

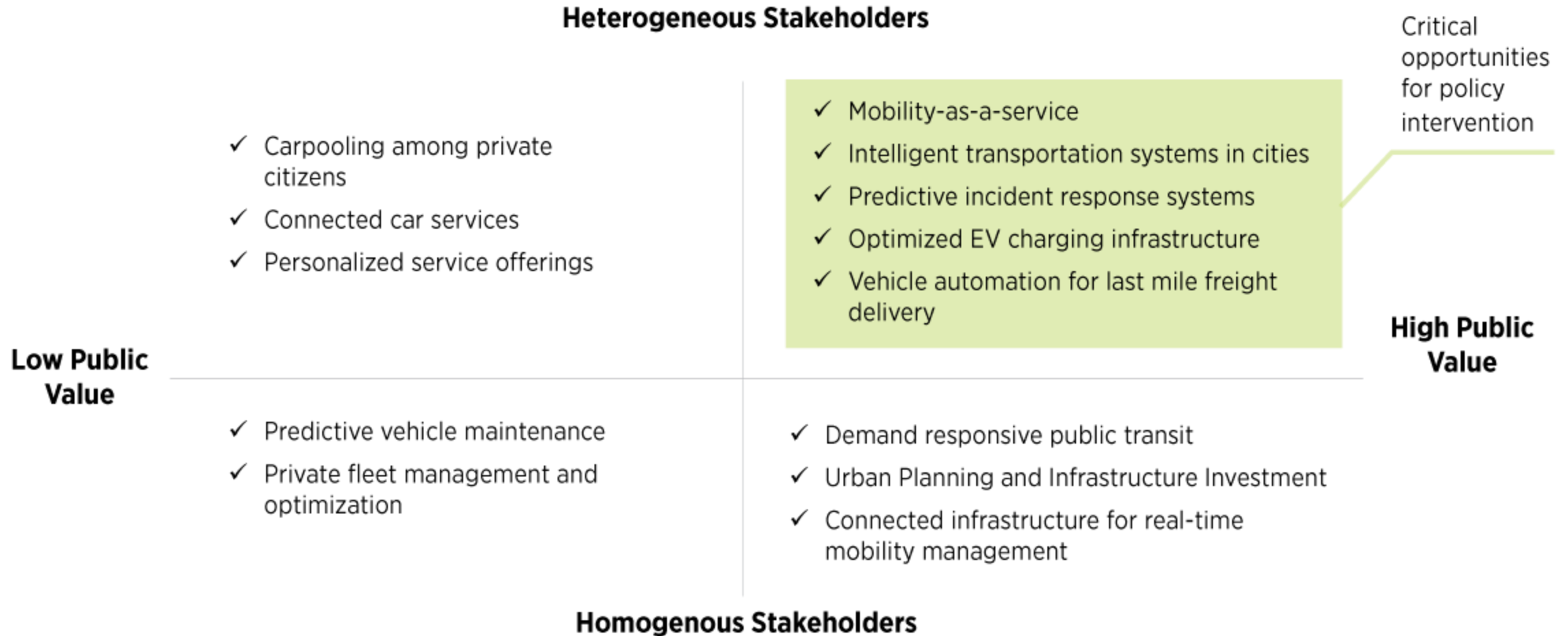
PATH 2: Ad hoc and heterogenous policy making that may lag market and technology development

Potential Outcomes

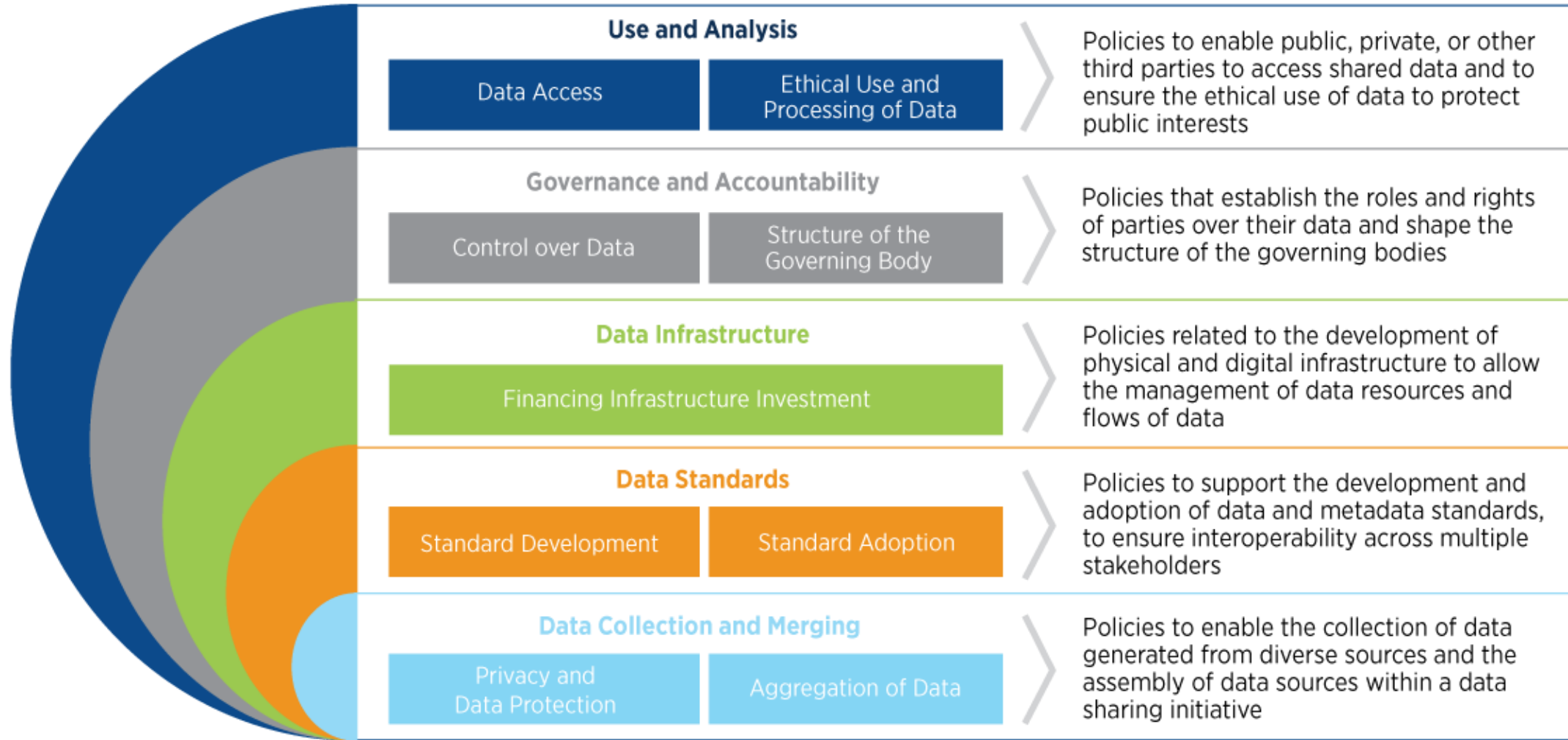
- Data sharing supporting the transition to sustainable mobility
- Competitive data economy
- Ethical, privacy-proof and unbiased use of data
- Harmonized approaches and shared best practices to enable scaled impact

- Siloed approaches exacerbate mobility challenges
- Monopolized data economies, with widening data divide
- Accentuated biases rooted in race, gender, age, etc.
- Heterogeneous data sharing rules lead to local, irreplicable impact

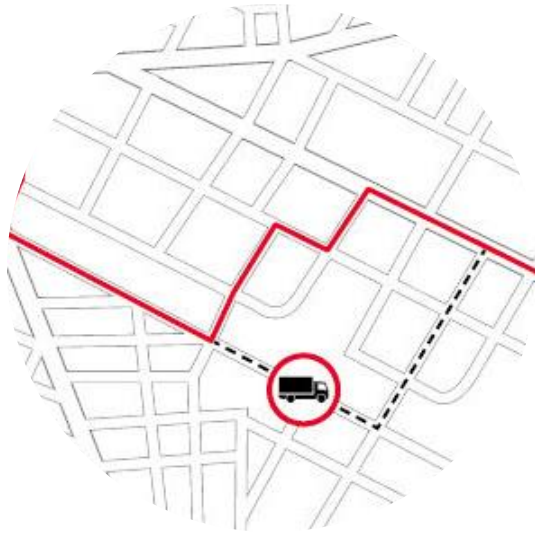
Policy makers must prioritize action



Policy framework for data sharing in mobility



Other use cases for data sharing in informal transportation



Route and schedule rationalization



Digital integration of multimodal transportation options



Accelerating electrification of informal transportation

Aman Chitkara Chitkara@wbcsd.org



Lead.
Transform.
Succeed.